

Bene'-Kelly Insurance Newsletter

11880 Gravois Road, St. Louis, MO 63127
314-849-2888
www.bene-kelly.com

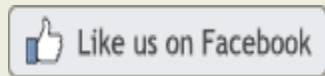
January 2017

In This Issue

Don't Jump Ship - Call Us!
News Around the Office



We Love Referrals!



Quick Links

Our Website

Products

Services

Join Our Mailing List!

Don't Jump Ship - We Have Options!

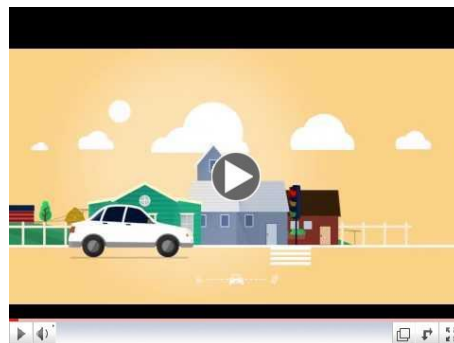


Yes, **auto rates** are on the rise.

[Click here](#) to see why. As an Independent Agent, we have **MORE CHOICES** for you.

We can make suggestions to get your price down.....

- EARN UP TO 30% OFF your auto rates for life.



- PAYMENT PLANS can save you money
- Are you eligible for a LOW MILEAGE discount?

We can compare rates with other companies for you.

We are dedicated to providing every client with insurance products to fit their needs **at the best price!**

Call Us - WE ARE HERE FOR YOU.

News Around the Office

The Team Member we are highlighting this month is Carol Casserly.

**Carol Casserly -
Movie Critic, Mom, and Insurance Agent!**

Carol started her insurance career in 1997 working as an Underwriter at Safeco Insurance. She joined Bene'-Kelly in 2005 and is a licensed Property, Casualty, Life and Health Agent. She also services the Commercial clients in our office.

Carol is married to Matt and has two daughters in college. She spends her free time catching a new movie, going to the Lake of the Ozarks, and spending time with family and friends.

